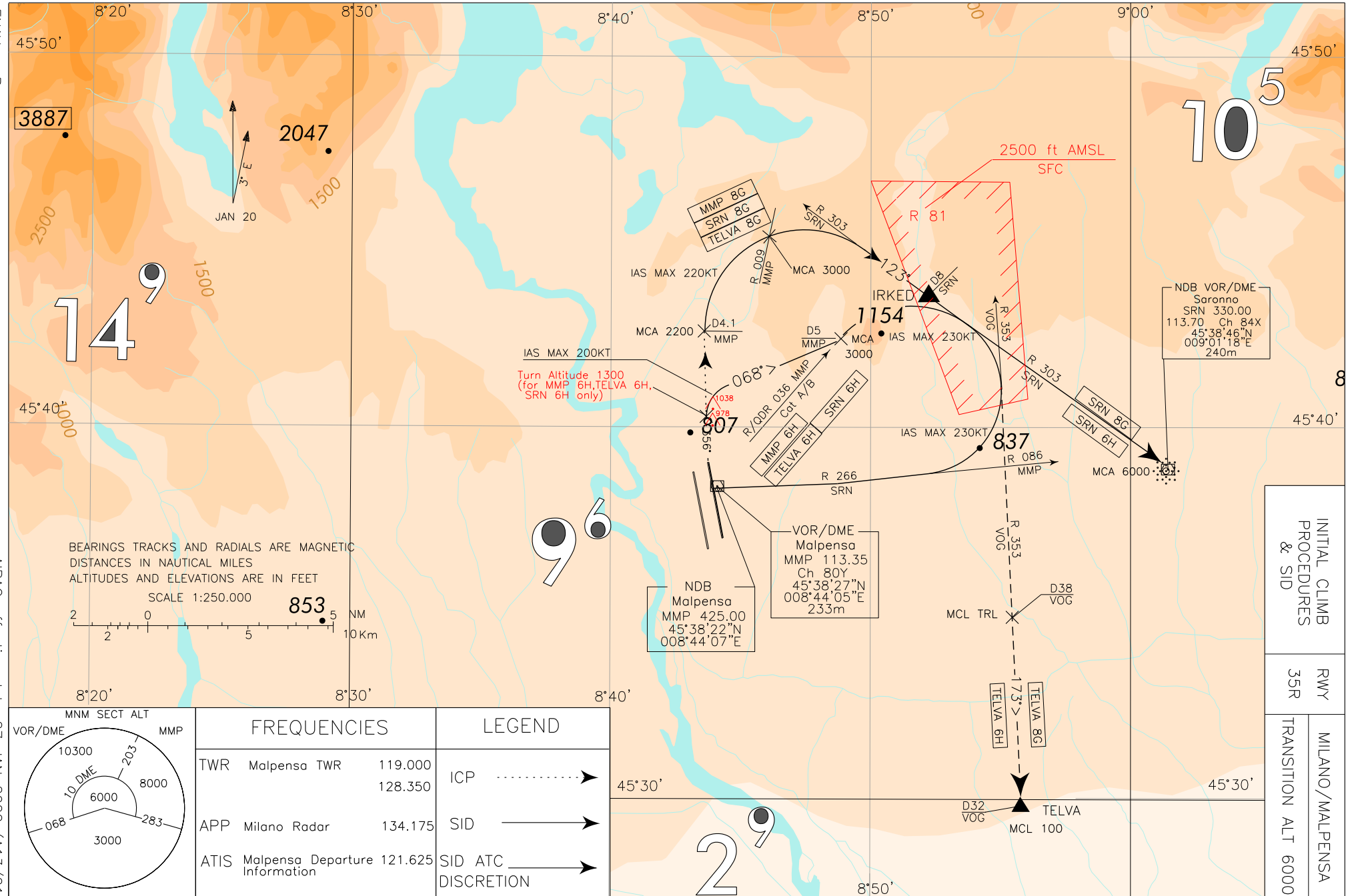


CHANGE: SPEED LIMIT ADDED – MAGNETIC VARIATION UPDATED

ENAV – Roma

AIP – Italia



AIRAC effective date 27 JAN 2022 (A13/21)

**NOISE ABATEMENT PROCEDURES RWY 35R**

See AD 2 Table 21 "NOISE ABATEMENT PROCEDURES"

**INITIAL CLIMB PROCEDURES RWY 35**

- A) If cleared via SID SRN 8G, TELVA 8G (ATC discretion) and MMP 8G, after take-off proceed on TR 356°. At 4.1 NM MMP DME turn right to join the assigned SID.

**REMARKS**

1. Minimum climb gradient 7.58% (461 ft/NM) until passing:
  - 3000 ft for SRN 8G
  - Transition level for TELVA 8G (ATC discretion)
  - 4000 ft for MMP 8G
2. Turn at 4.1 NM MMP DME shall be executed with IAS MAX 220KT

- B) If cleared via SID SRN 6H, TELVA 6H (ATC discretion) and MMP 6H, after take-off proceed on TR 356° until passing 1300ft to join the assigned SID.

**REMARKS**

1. Minimum climb gradient 7.58% (461 ft/NM) until passing 3000 ft, then 5.76% (350 ft/NM).
2. Turn leaving 1300FT shall be executed with IAS MAX 200KT

**WARNING (for all ICP RWY 35R)**

There are close-in obstacles penetrating OIS 2.5% but they were not considered for the published procedure design gradient (see ICAO Obstacle Charts and NOTAM in force).

**SID DESCRIPTION RWY 35R**

Initial climb procedure executed:

**MMP 8G**

Join RDL 303 SRN VOR till point IRKED (RDL 303/8NM SRN VOR/DME) then turn right (IAS MAX 230KT) to join RDL 353 VOG VOR. Leaving 4000 FT turn right (IAS MAX 230KT) to join RDL 266 SRN VOR (RDL 086 MMP VOR) bound to MMP VOR/DME.

MCA/MCL: INT TR 356°/4.1 NM MMP DME, 2200 FT; INT RDL 009 MMP VOR, 3000 FT

**MMP 6H**

Turn right (on TR 068° for Cat. C aircraft) to join and follow RDL 036 MMP VOR (QDR 036° MMP NDB) until 5 NM MMP DME, then turn right (IAS MAX 230KT) on TR 173°. Passing through 4000Ft turn right (IAS MAX 230KT) to join RDL 266 SRN VOR (RDL 086 MMP VOR) bound to MMP VOR/DME.

MCA/MCL: 5NM MMP DME, 3000 FT

**SRN 8G**

Join RDL 303 SRN VOR bound to SRN VOR/NDB.

MCA/MCL: INT TR356°/4.1 NM MMP DME, 2200 FT; INT RDL 009 MMP VOR, 3000 FT; SRN VOR/NDB, 6000 FT

**SRN 6H**

Turn right (on TR 068° for Cat. C aircraft) to join RDL 036 MMP VOR (QDR 036° MMP NDB) until 5 NM MMP DME, then turn right (IAS MAX 230KT) to RDL 303 SRN VOR direct to SRN VOR/NDB.

MCA/MCL: 5NM MMP DME, 3000 FT; SRN VOR/NDB, 6000 FT

**TELVA 8G (ATC discretion)**

Join RDL 303 SRN VOR till point IRKED (RDL 303/8NM SRN VOR/DME), then turn right (IAS MAX 230KT) to join RDL 353 VOG VOR bound to TELVA (INT RDL 353/32 NM VOG VOR/DME).

MCA/MCL: INT TR 356°/4.1 NM MMP DME, 2200 FT; INT RDL 009 MMP VOR, 3000 FT; RDL 353/38 NM VOG VOR/DME, TRL; TELVA, FL100

**TELVA 6H (ATC discretion)**

Turn right (on TR 068° for Cat. C aircraft) to join and follow RDL 036 MMP VOR (QDR 036° MMP NDB) until 5 NM MMP DME, then turn right (IAS MAX 230KT) to join and follow RDL 353 VOG VOR direct to TELVA (INT RDL 353/32 NM VOG VOR/DME).

MCA/MCL: 5NM MMP DME, 3000 FT; RDL 353/38 NM VOG VOR/DME, TRL; TELVA, FL 100

**USE OF AERODROME BY AIRCRAFT CHAPTER 2 ANNEX 16 ICAO.**

Aircraft chapter 2 annex 16 ICAO cannot use Malpensa airport, except for emergency

Intenzionalmente bianca

*Intentionally left blank*